



**Technology Solutions, Inc.**

**Complete IT / VOICE**

Proactively Managing your Success



## Benefits Of Thin Clients/Terminal Services

**Lower IT administration costs** - Thin clients are managed almost entirely at the server. The hardware has fewer points of failure and the client is simpler (and often lacks permanent storage), providing protection from malware.

**Easier to secure** - Thin clients can be designed so that no application data ever resides on the client (just whatever is displayed), centralizing malware protection and reducing the risks of physical data theft.

**Enhanced data security** - Should a thin-client device suffer serious mishap or industrial accident, no data will be lost, as it resides on the terminal server and not the point-of-operation device.

**Lower hardware costs** - Thin client hardware is generally cheaper because it does not contain a disk, application memory, or a powerful processor. They also generally have a longer period before requiring an upgrade or becoming obsolete.. Many pc's are replaced after 3 years to avoid failures of. The total hardware requirements for a thin client system (including both servers and clients) are usually much lower compared to a system with pc's.

**Less energy consumption** - Dedicated thin client hardware has much lower energy consumption than typical thick client PCs. This not only reduces energy costs but may mean that in some cases air-conditioning systems are not required or need not be upgraded which can be a significant cost saving and contribute to achieving energy saving targets.



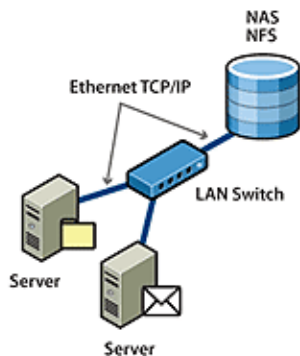
**"GO GREEN"**

**Reduces energy costs, which means better for the environment.**



**Easier hardware failure management** - If a thin client fails, a replacement can simply be and the user is not inconvenienced because their data is not on the client.

**Operable in Excessive Environmental Conditions** - Most thin clients have no moving parts so can be used in dusty environments without the worry of PC fans clogging up and overheating and burning out the PC.



**Less network bandwidth** - Since terminal servers typically reside on the same high-speed network backbone as file servers, most network traffic is confined to the server room.

**Simple hardware upgrade path** - The existing units can continue to serve alongside the new, whereas a thick client model requires an entire desktop unit be replaced, resulting in down-time for the user, and the problem of disposing of the old unit.



[www.ctscomplete.com](http://www.ctscomplete.com)    [sales@ctscomplete.com](mailto:sales@ctscomplete.com)  
**800-443-3068**



**Celebrating 25 years in business...**  
providing exceptional service, building long term partnerships with our customers, and being a pioneer in communications technology.

### MISSION STATEMENT

CTS provides exceptional value through managed services that assures a fixed cost for our business partners. Our highly trained and motivated professionals constantly strive to offer proactive services that maximize the profits, productivity, and competitive advantages of those partners.

**Corporate Headquarters**  
154 W. Broadway; P.O.B. 278  
Sparta, IL 62286

•  
110 N. High Street  
Suite 4  
Belleville, IL 62220

•  
1804 Supply Road  
Carterville, IL 62918

•  
12101 Woodcrest Exec. Drive  
Suite 105  
St. Louis, MO 63141

•  
1606 Independence  
Suite 1  
Cape Girardeau, MO 63701

[www.ctscomplete.com](http://www.ctscomplete.com)    [sales@ctscomplete.com](mailto:sales@ctscomplete.com)

**800-443-3068**